



# ALPACA EDUCATIONAL PROGRAMS

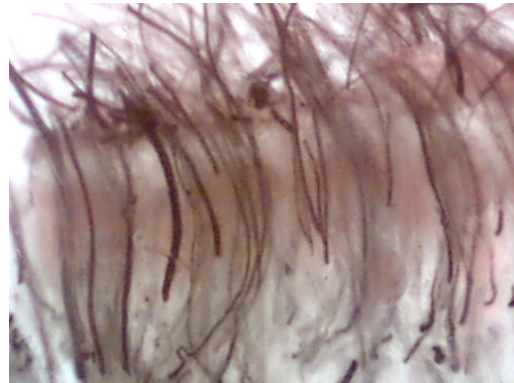
Conducted by Cameron Holt I.S.F.

## INTRODUCTION TO ALPACA FIBRE PRODUCTION (2 days)

### ALPACA IDENTIFICATION AND STRUCTURE

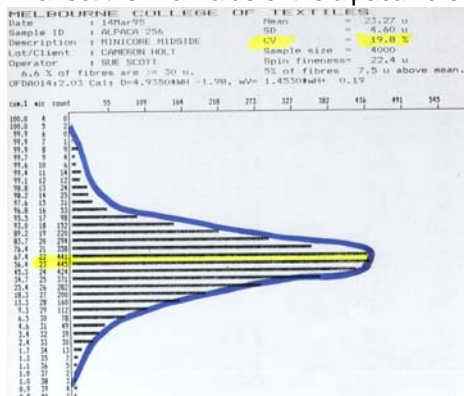
This topic explores the formation, growth of the fibre follicle and structure of the alpaca fibre.

The differences of huacaya and suri are explained



### FACTORS THAT INFLUENCE THE VALUE OF ALPACA FIBRE

This topic briefly looks at the economic influences that affect the final value of the alpaca fibre to the grower.



### BASIC MEASUREMENT OF ALPACA FIBRE

This topic will fully explain to students the best methods of sampling alpacas for fibre information along with the requirements for fleece weighing. The various testing machines used in the industry will be fully discussed as well as students being shown how to correctly read and understand histograms.

### PREPARATION OF ALPACA FIBRE

This topic will fully demonstrate a correct method for shed preparation of alpaca fibre, discussing shearing technique, preparation of the fibre on the shearing board through to skirting and further preparation of the fleece on the table. Students will also be given a generic format for the dispersal of their fleece to either a co-operative or a processing organisation.



Students will be trained in identifying the main attributes of alpaca fibre and shown current industry groupings to which this fleece will be classed.

**THERE IS A MAJOR PRACTICAL COMPONENT IN THIS PROGRAM.**

