



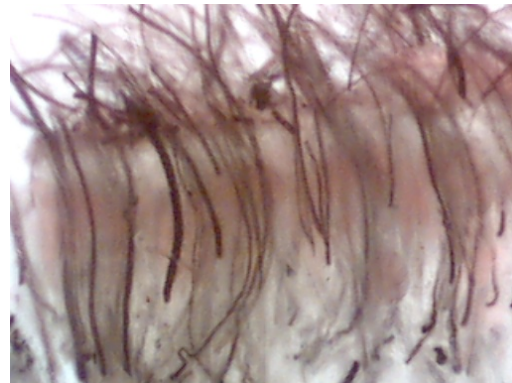
ALPACA EDUCATIONAL PROGRAMS

Conducted by Cameron Holt I.S.F.

WHAT YOU NEED TO KNOW ABOUT ALPACA FIBRE (2days)

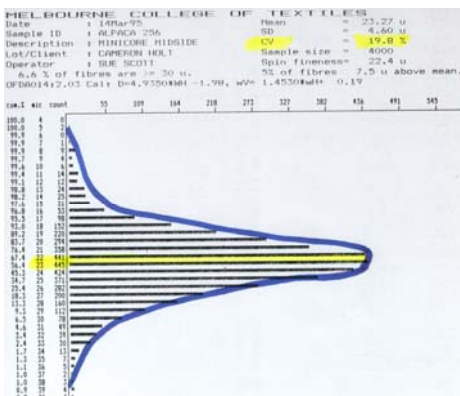
ALPACA IDENTIFICATION AND STRUCTURE

This topic explores the formation, growth of the fibre follicle and structure of the alpaca fibre.
The differences of huacaya and suri are explained



FACTORS THAT INFLUENCE THE VALUE OF ALPACA FIBRE

This topic briefly looks at the economic influences that affect the final value of the alpaca fibre to the grower.



BASIC MEASUREMENT OF ALPACA FIBRE

This topic will fully explain to students the best methods of sampling alpacas for fibre information along with the requirements for fleece weighing. The various testing machines used in the industry will be fully discussed as well as students being shown how to correctly read and understand histograms.

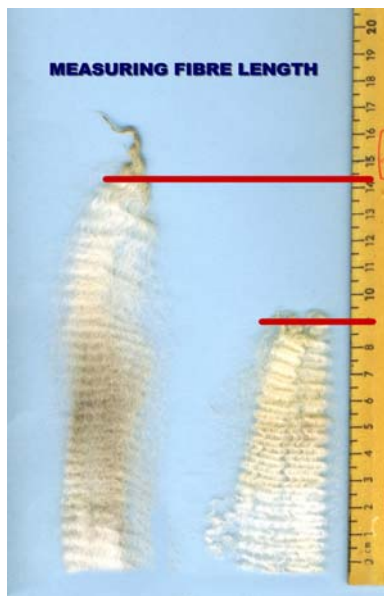
CHARACTERISTICS OF ALPACA FIBRE

Here the main characteristics are discussed and how to access each of the characteristics. eg

CRIMP



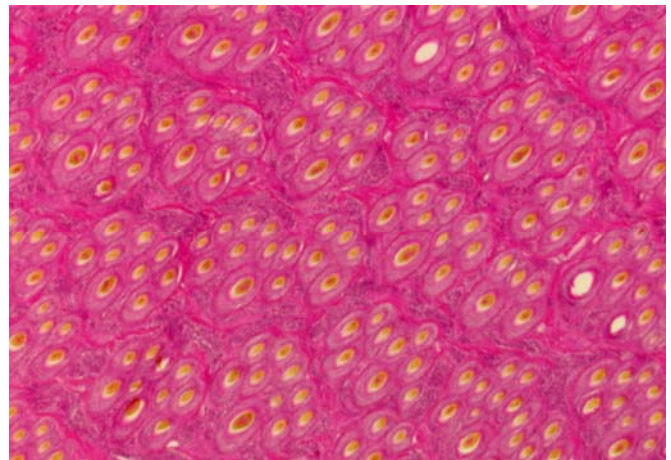
SURI STYLE



LENGTH

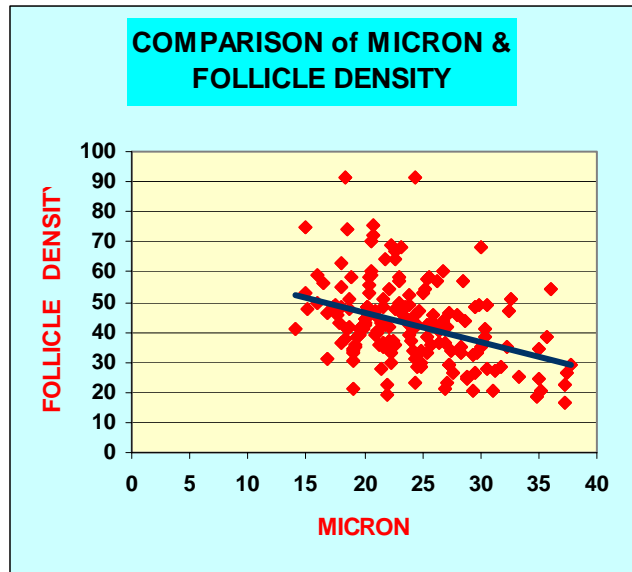
FOLLICLE STRUCTURE

A special emphasis is placed in this program on the development of follicles within the skin giving students the knowledge so they can understand the value of SP Ratios, primary and secondary differences as well as overall densities per square millimetre.



USING MEASUREMENT IN SELECTION

Demonstrates to students how best to use these measurements in the selection of their animals.



FIBRE APPRAISAL

This topic identifies the attributes that go to make an elite fibre. Some of this program will be of a practical nature.

