



ALPACA EDUCATIONAL PROGRAMS

Conducted by Cameron Holt I.S.F.

ADVANCED ALPACA FIBRE PRODUCTION (2days)

FIBRE DEVELOPMENT

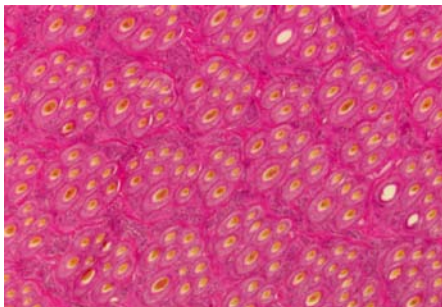
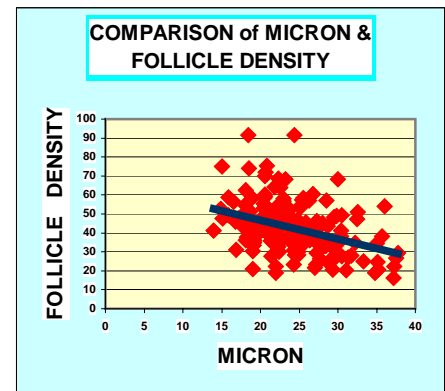
This topic is a part revision from the introductory course but it looks at the subject in greater depth and discusses studies of follicle development at a more advanced level.

USING MEASUREMENT IN SELECTION

Again this topic builds on the knowledge of measurement from the introductory course and demonstrates to students how best to use these measurements in the selection of their animals.

CHARACTERISTICS OF ALPACA FIBRE

Here the main characteristics are further discussed and the use of measurement within each of the characteristics.



FOLLICLE STRUCTURE

A special emphasis is placed in this program on the development of follicles within the skin giving students the knowledge so they can understand the value of SP Ratios, primary and secondary differences as well as overall densities per square millimetre. Students will be made aware of the method of sampling for this test.

ADVANCED FIBRE APPRAISAL

This topic identifies the attributes that go to make an elite fibre. Most of this program will be of a practical nature.

FLEECE PRODUCTION VERSUS DOLLAR PER HEAD

Students will be shown how to estimate the clean fibre content of their fleece and to estimate its net worth.

PRACTICAL – a major component of this course will be of a practical nature.



FLEECE EXAMPLES

THE IDEAL HUACAYA FIBRE

ELITE



SUPERIOR



GOOD



AVERAGE



POOR



THE IDEAL SURI FIBRE

SUPERIOR



W/T RINGLET



TWIST RINGLET

GOOD



W/T RINGLET



LARGE WAVE / BROAD LOCK

AVERAGE



POOR

